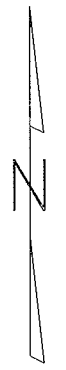
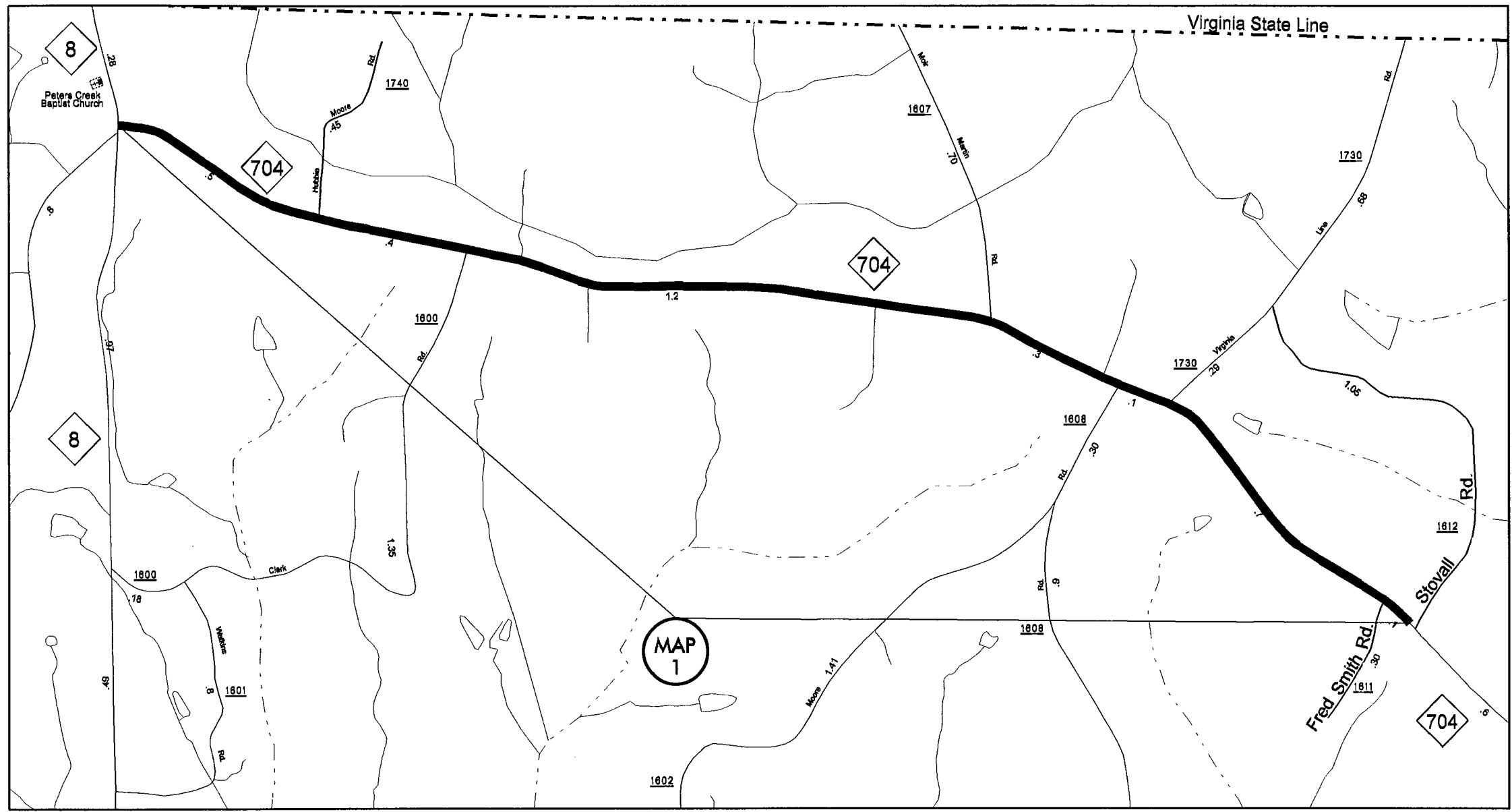


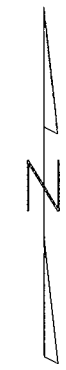
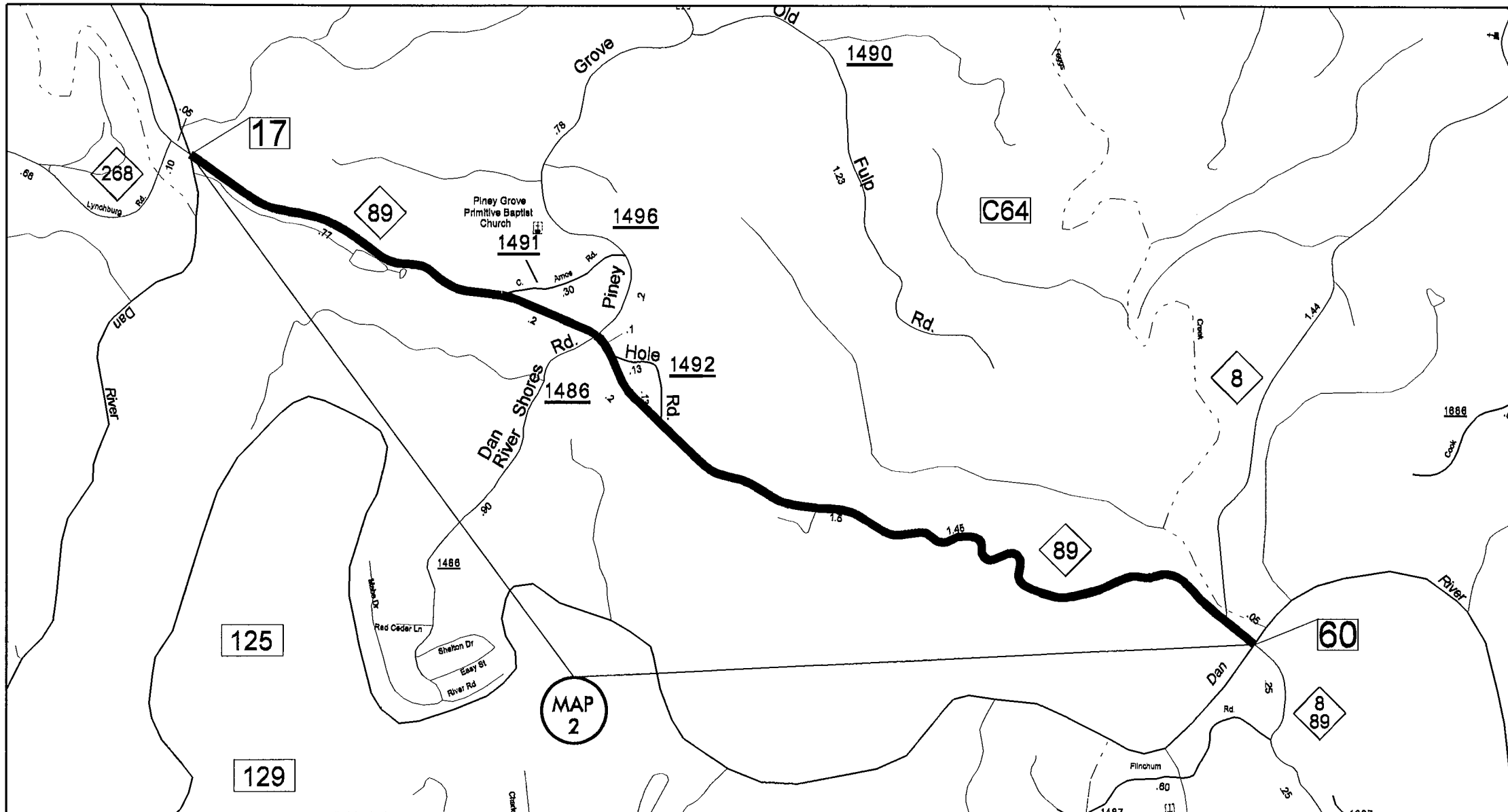
PROJECT REFERENCE NO.	SHEET NO.
2018CPT.09.9.10851 2018CPT.09.10.20851	1



MAP 1  
 NC 704  
 Mill 1 1/2"  
 Pave back with 1 1/2" S9.5C

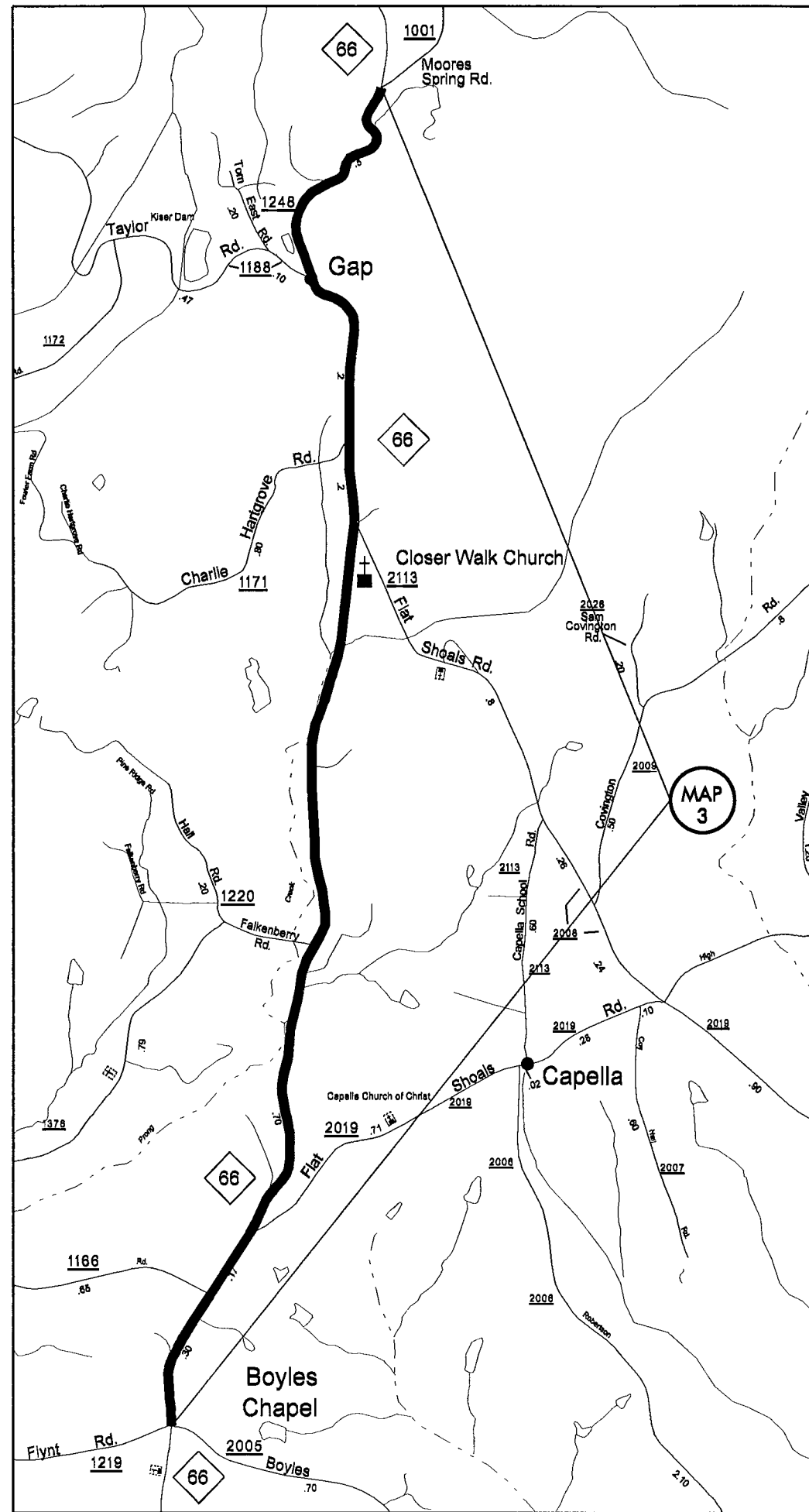
**STOKES COUNTY**  
 NORTH CAROLINA

PROJECT REFERENCE NO.	SHEET NO.
2018CPT.09.9.10851 2018CPT.09.10.20851	2



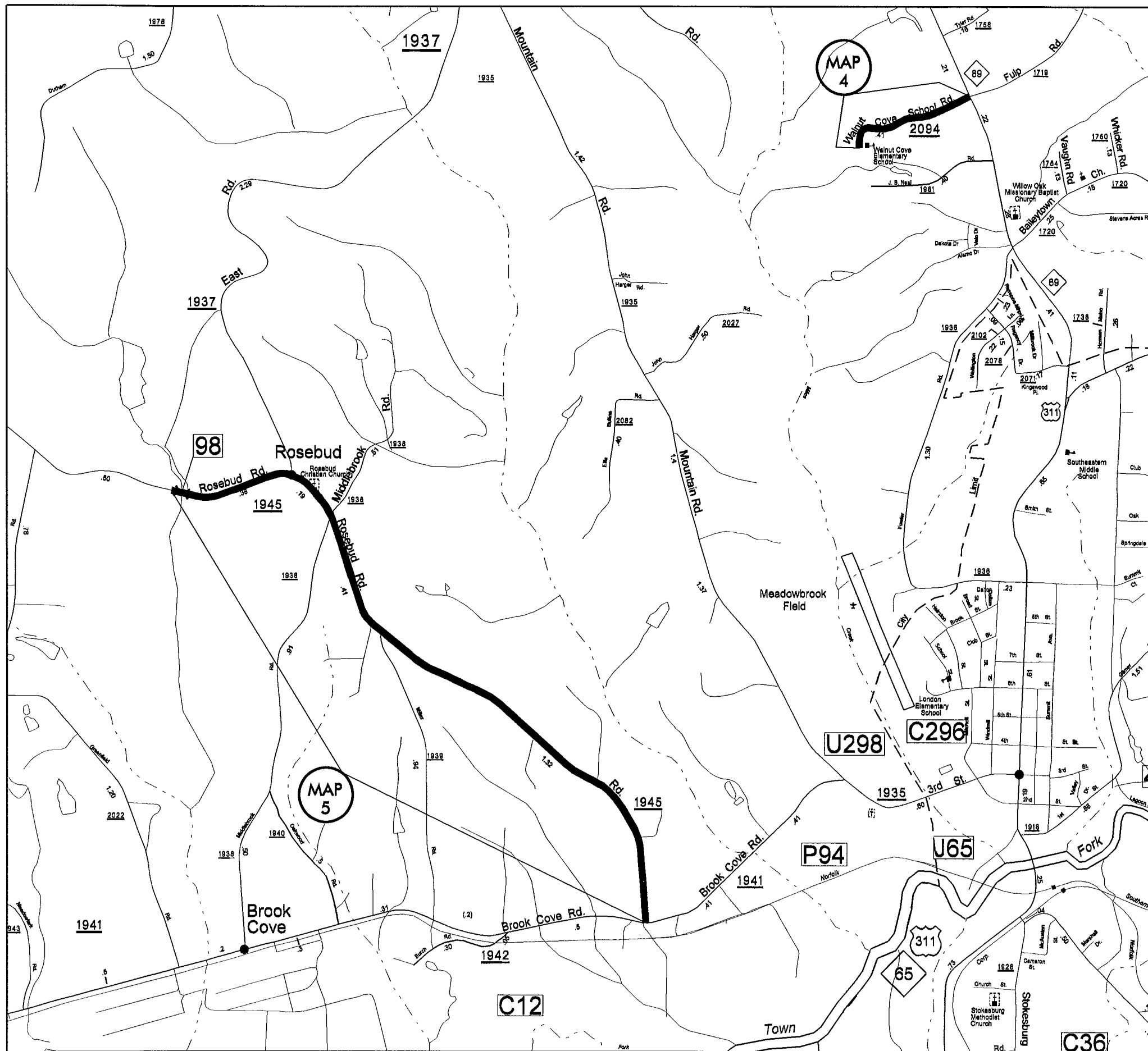
MAP 2  
 NC 89  
 Mill 1 1/2"  
 Pave back with 1 1/2" S9.5C

**STOKES COUNTY**  
 NORTH CAROLINA



MAP 3  
 NC 66  
 Butt Mill ends of Map.  
 Pave with 1 1/2" 9.5C  
 Patching by NCDOT Forces.

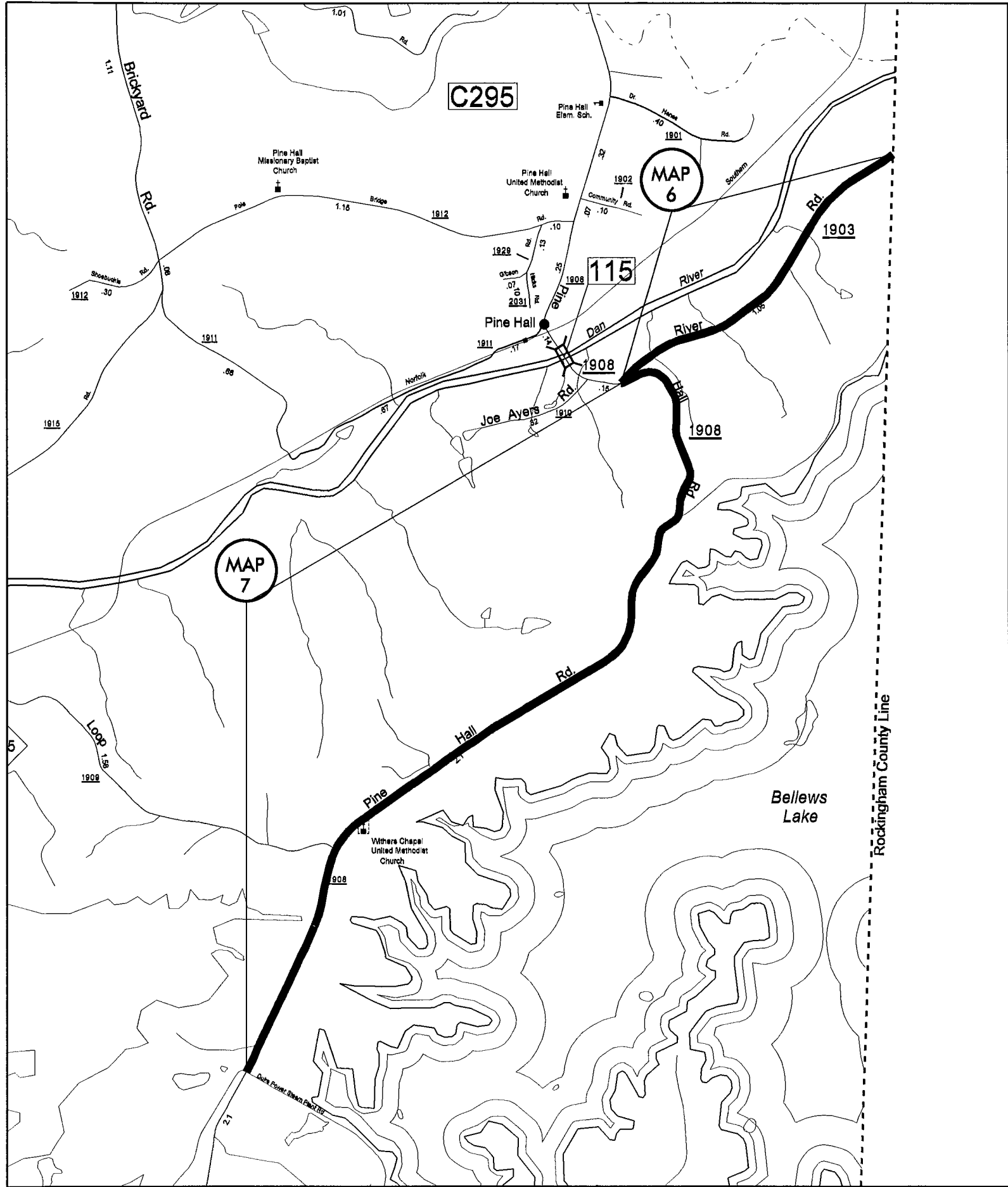
**STOKES COUNTY**  
 NORTH CAROLINA



**MAP 4**  
 Walnut Cove School Rd. SR 2094  
 Patching by NCDOT Forces.  
 Tie In Mill at Map ends.  
 PAVE 1 1/2" S9.5C

**MAP 5**  
 Rosebud Rd. SR 1945  
 Patching by NCDOT Forces.  
 Tie In Mill Map Ends  
 and Bridge Approaches.  
 Mill Bridge Deck 1 1/2" depth.  
 PAVE 1 1/2" S9.5C

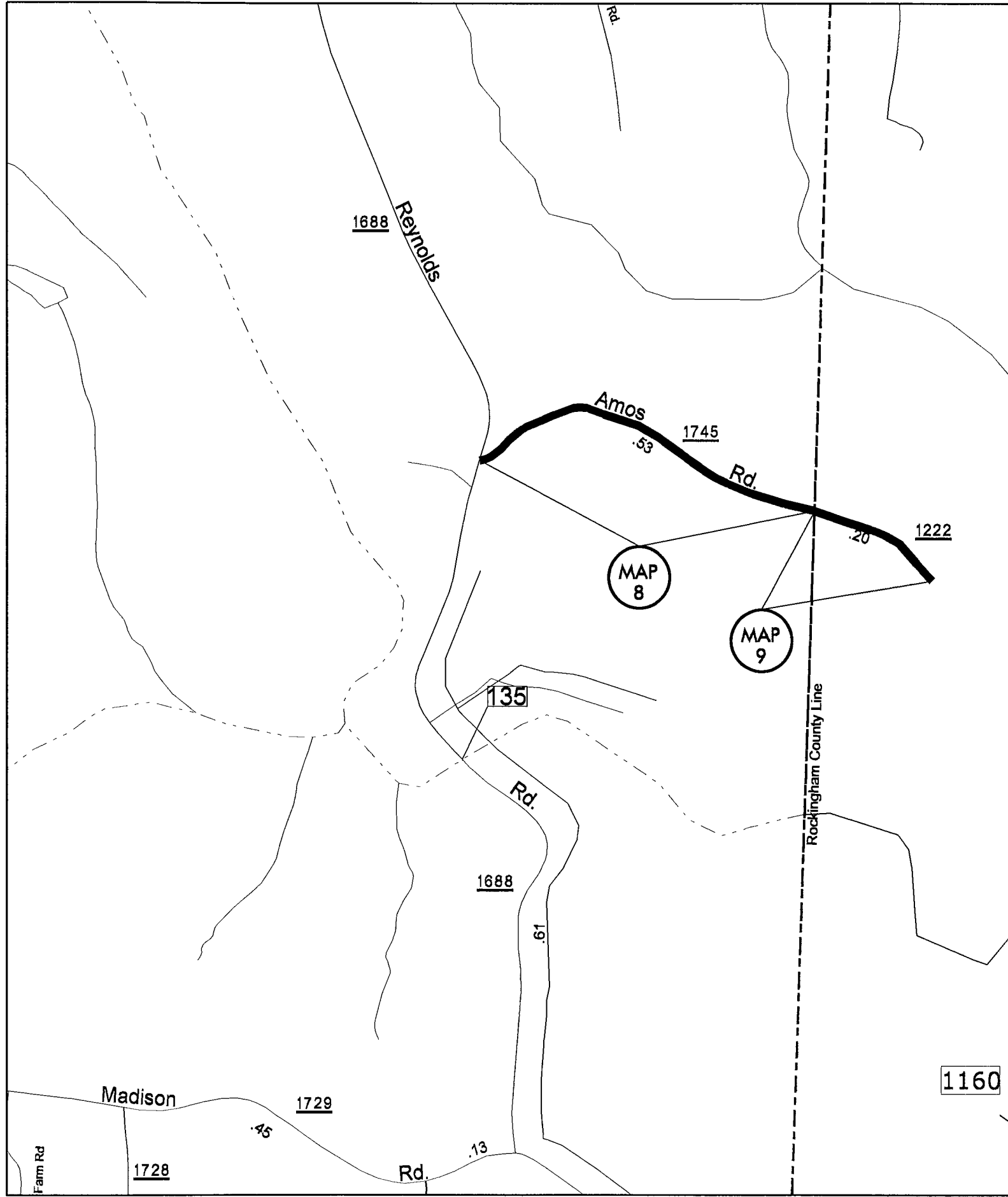
**STOKES COUNTY**  
 NORTH CAROLINA



MAP 6  
 River Rd. SR 1903  
 Patching by NCDOT Forces.  
 Pave with 1½" S9.5C

MAP 7  
 Pine Hall Rd. SR 1908  
 Patching by NCDOT Forces.  
 Mill 1½" depth.  
 Pave back with  
 2½" I19.0B  
 and 1½" S9.5C

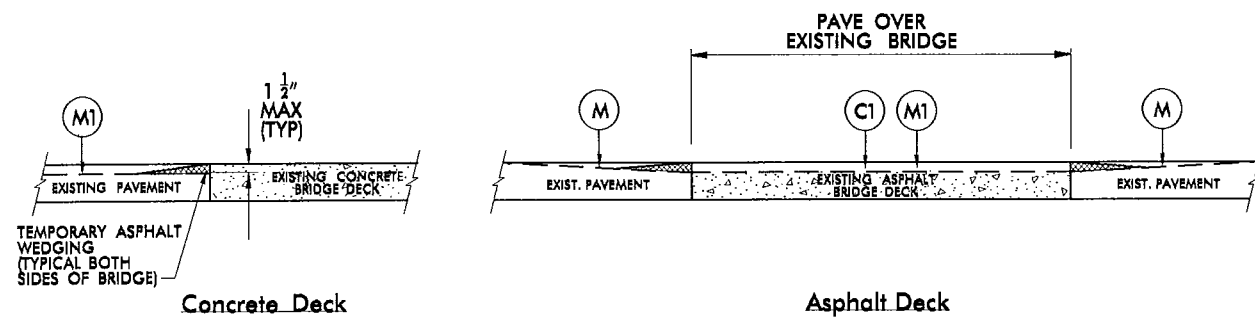
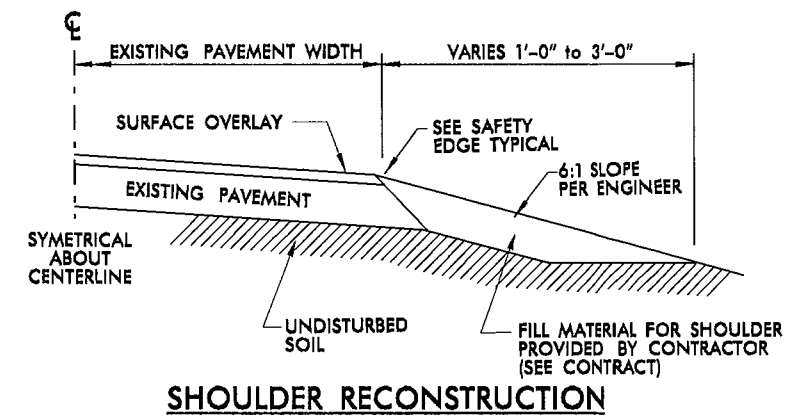
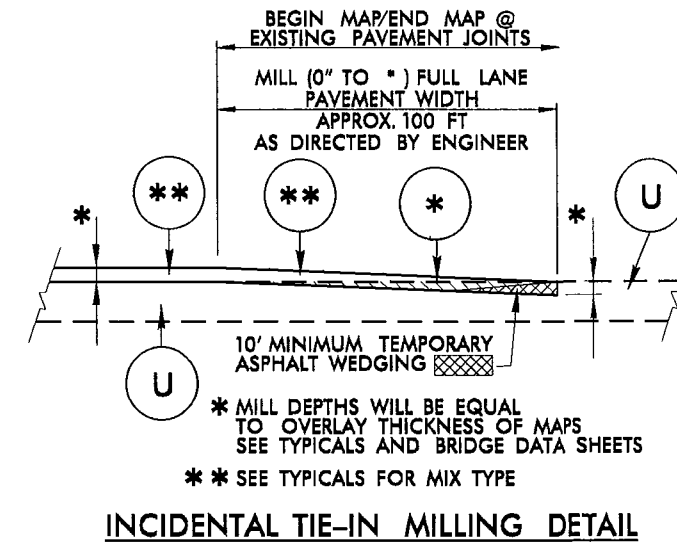
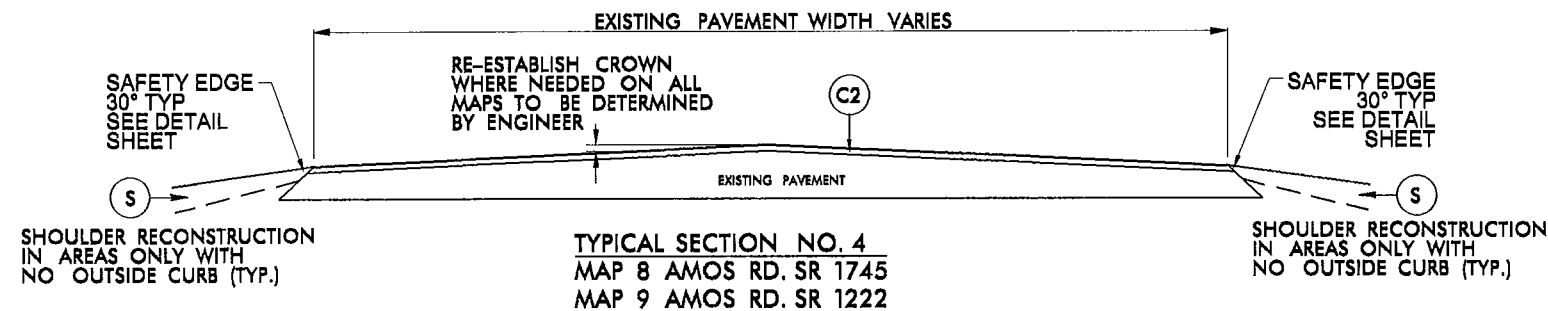
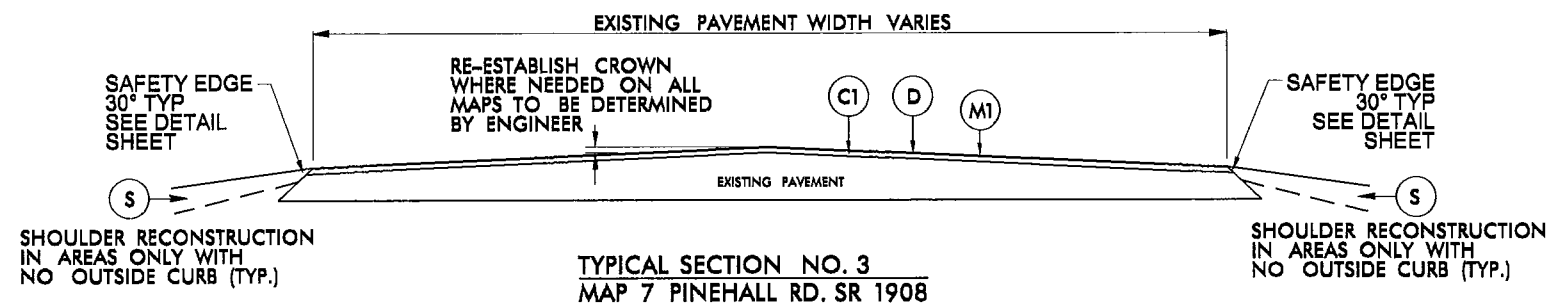
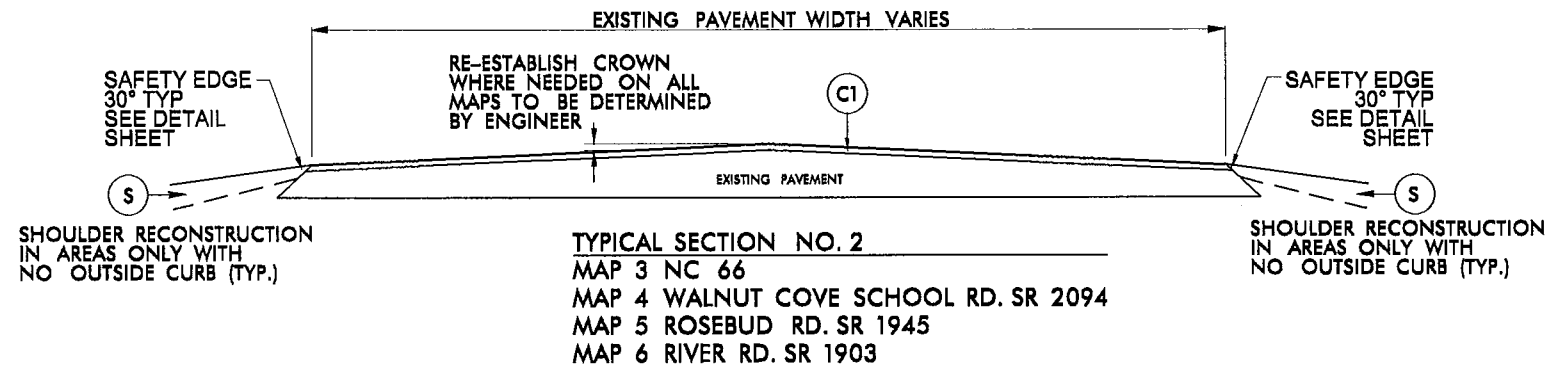
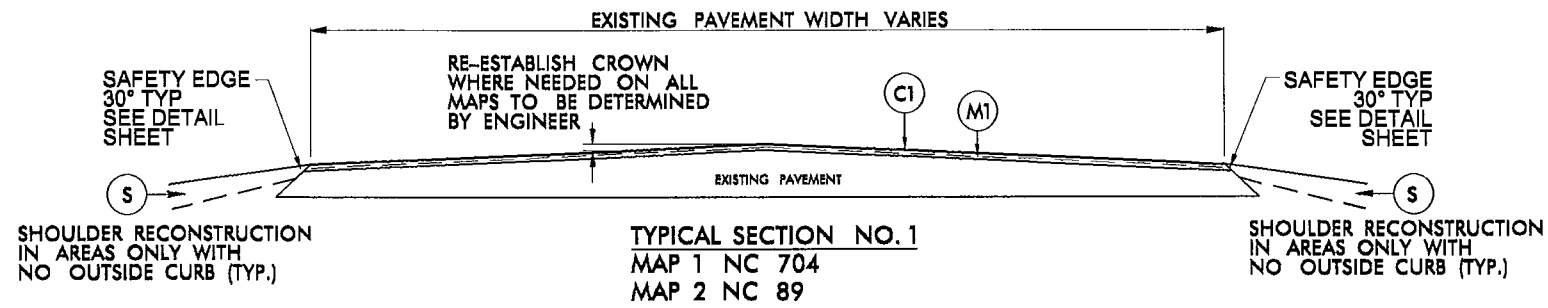
**STOKES COUNTY**  
 NORTH CAROLINA



MAP 8  
Amos Rd. SR 1745  
Pave with 2" S9.5C  
to Rockingham County  
line.

MAP 9  
Amos Rd. SR 1222  
Pave with 2" S9.5C  
to End of Maintenance  
in Rockingham County.

**STOKES COUNTY**  
NORTH CAROLINA



**INCIDENTAL MILLING BRIDGE APPROACHES**  
 (SEE BRIDGE DATA SHEET)

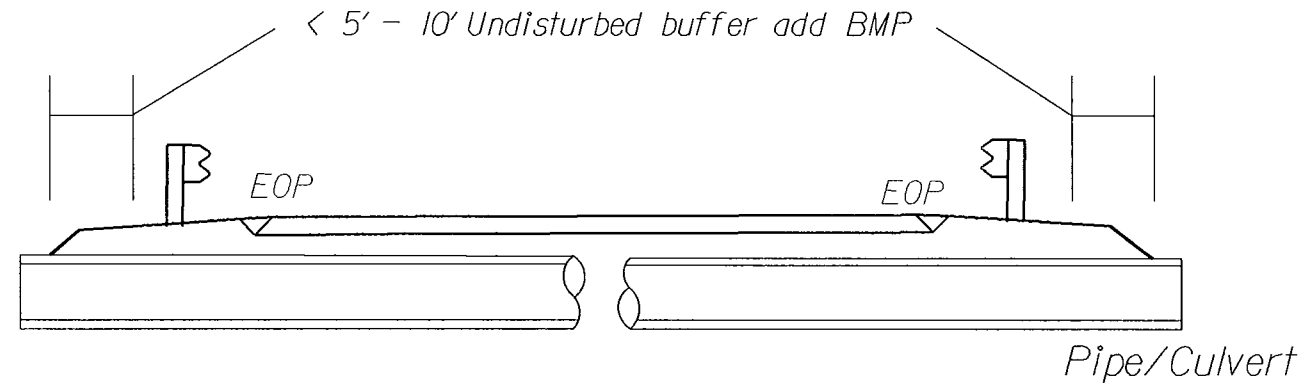
PAVEMENT SCHEDULE	
C1	PROP. APPROX. 1½" ASPHALT CONCRETE SURFACE COURSE, TYPE S9.5C, TO BE APPLIED AT AN AVERAGE RATE OF 168 LBS PER SQ. YD.
C2	PROP. APPROX. 2" ASPHALT CONCRETE SURFACE COURSE, TYPE S9.5C, TO BE APPLIED AT AN AVERAGE RATE OF 224 LBS PER SQ. YD.
D	PROP. APPROX. 2½" ASPHALT CONCRETE INTERMEDIATE COURSE, TYPE I19.0C, AT AN AVERAGE RATE OF 285 LBS. PER SQ. YD.
M	INCIDENTAL MILLING
M1	MILL ASPHALT PAVEMENT, 1½" DEPTH
M2	MILL ASPHALT PAVEMENT, 0-1½" DEPTH
S	SHOULDER RECONSTRUCTION (SEE DETAIL)
U	EXISTING PAVEMENT

NOTES: Less than 5' - 10' undisturbed buffer from ROW, ditchline, water feature, or drainage inlet, add BMP.

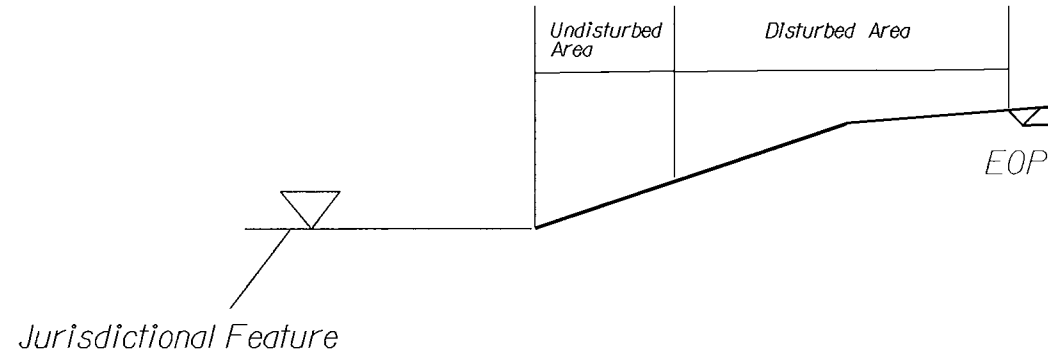
BMP Options: Wattle or Silt Fence

# EROSION CONTROL DETAIL

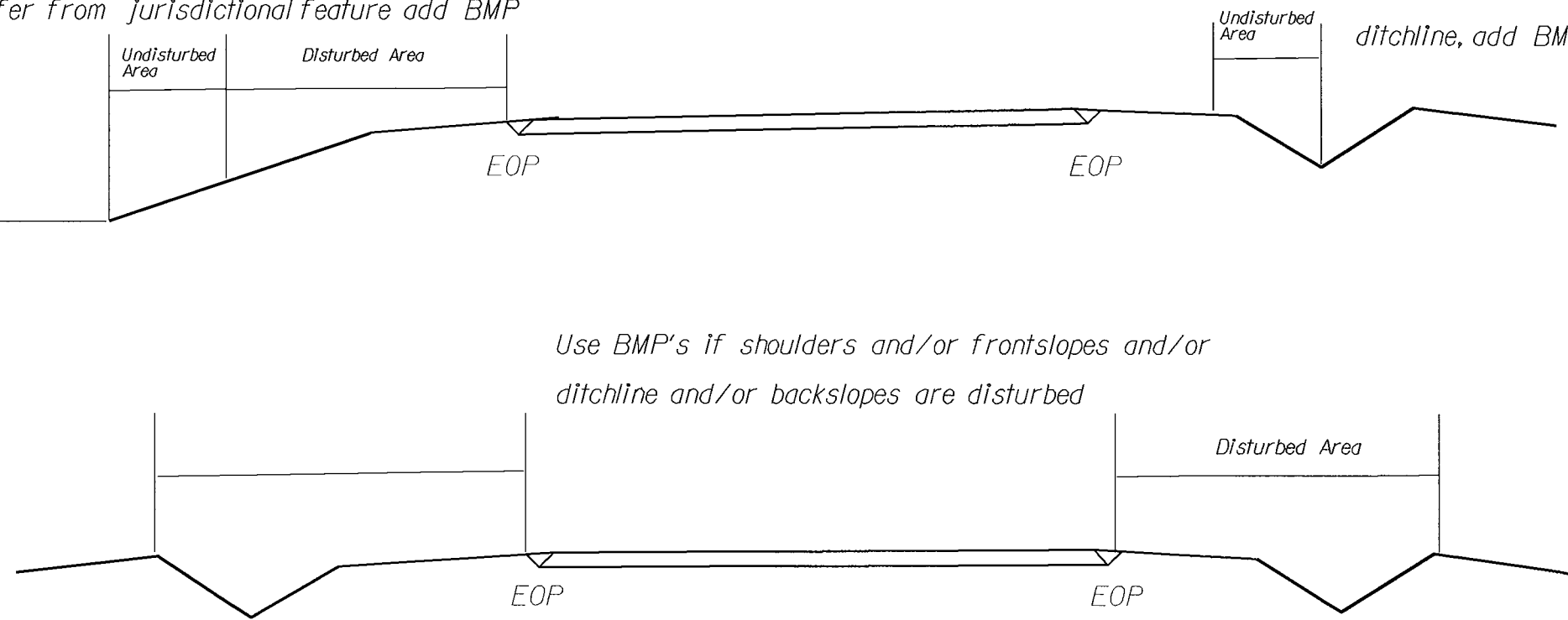
PROJECT REFERENCE NO.	SHEET NO.
2018CPT.09.9.10851 2018CPT.09.10.20851	8



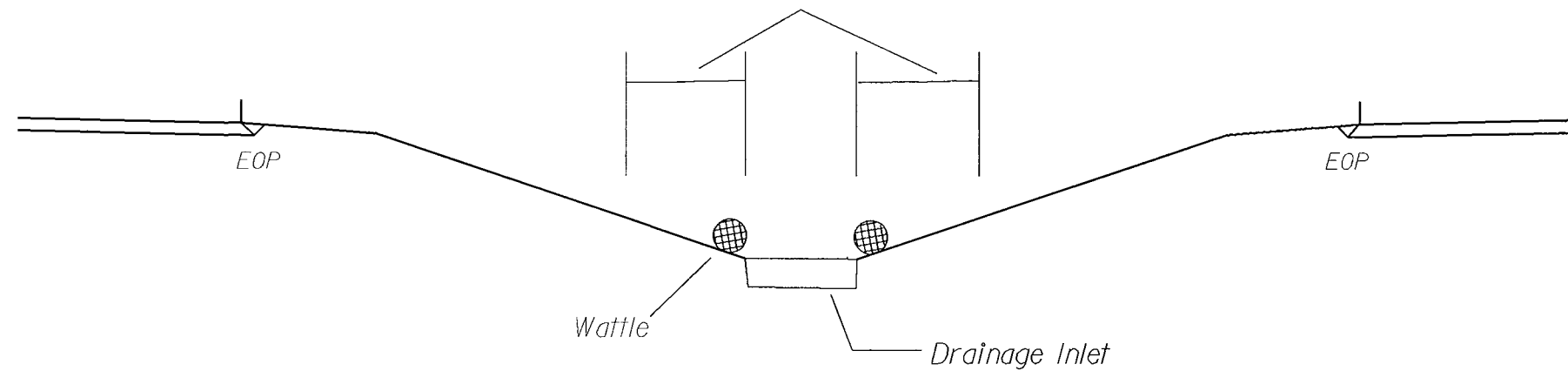
< 5' - 10' Undisturbed buffer from jurisdictional feature add BMP



< 5' - 10' Undisturbed buffer from ditchline, add BMP

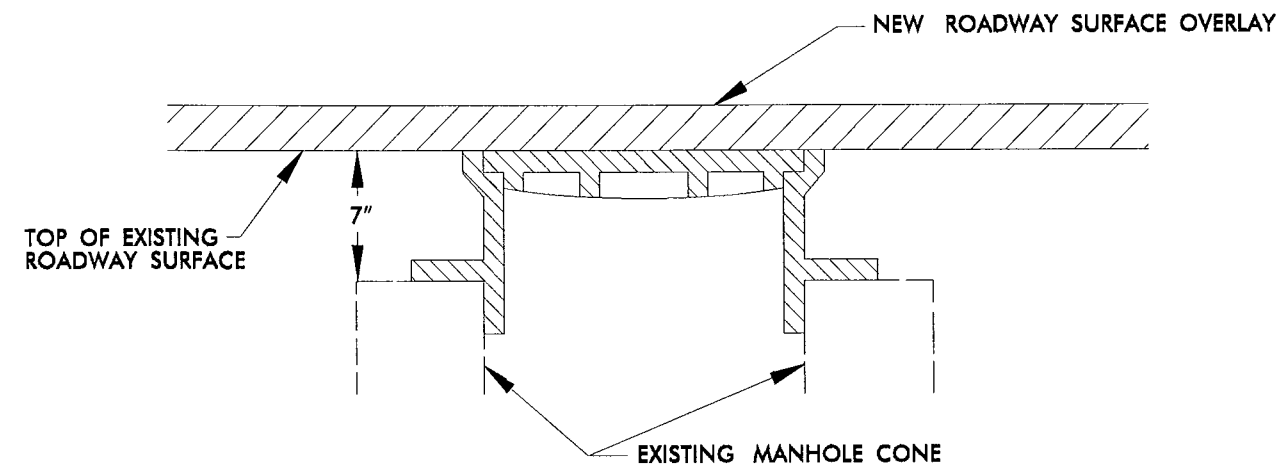
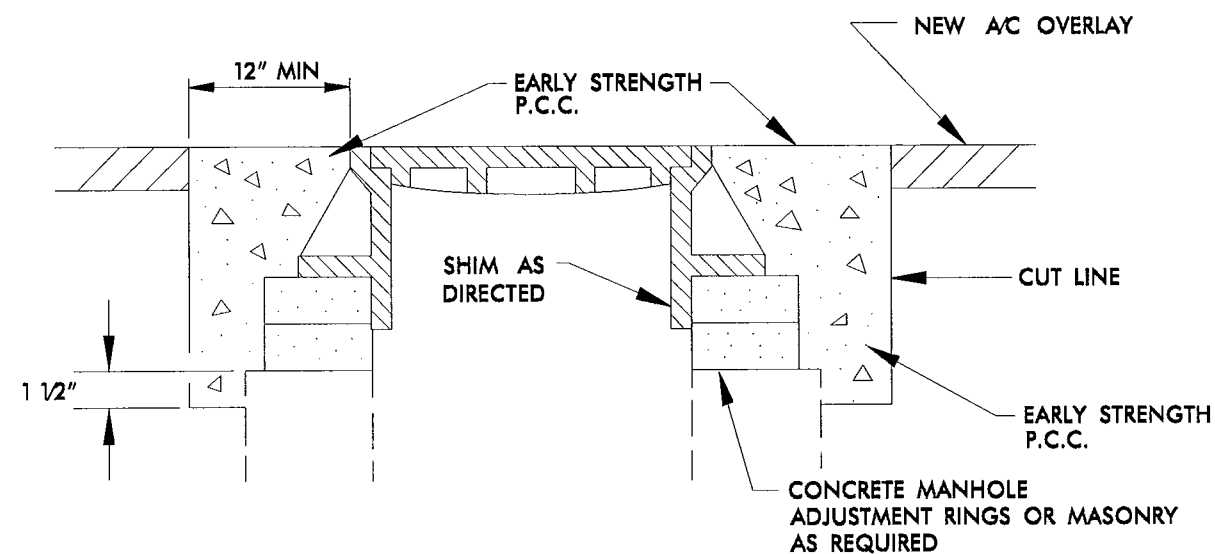


< 5' - 10' Undisturbed buffer from inlet, add wattle



NOT TO SCALE

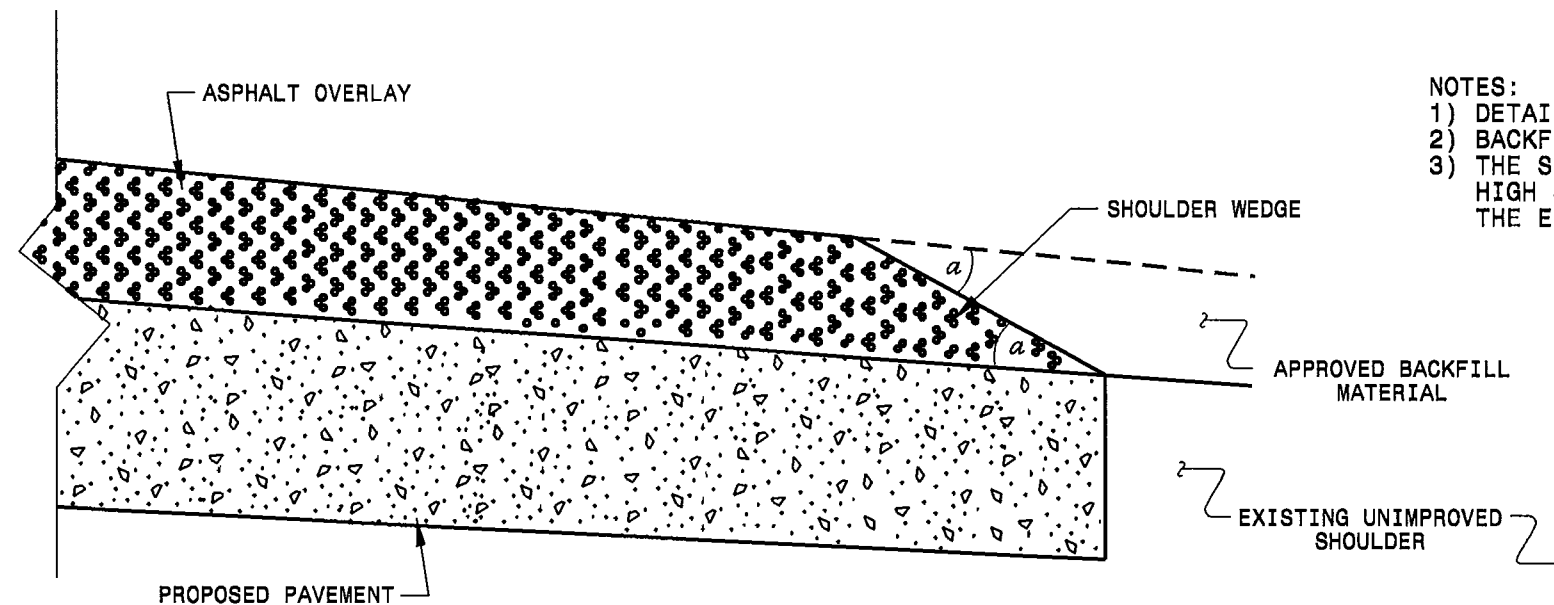


**STEP 1****STEPS 2,3, & 4**

- STEP 1 COVER EXISTING MANHOLE WITH APPROVED MATERIAL AND CONSTRUCT OVERLAY ACROSS TOP OF MANHOLE
- STEP 2 SAW CUT EXCAVATION AROUND MANHOLE 12" MIN. FROM MANHOLE FRAME.
- STEP 3 RAISE MANHOLE FRAME RINGS TO FINISH PAVEMENT PROFILE AND CROSS SLOPE.
- STEP 4 BACKFILL WITH EARLY STRENGTH P.C.C. TO DEPTHS AS DIRECTED.

**MANHOLE ADJUSTMENT DETAIL****CONSTRUCTION NOTES:**

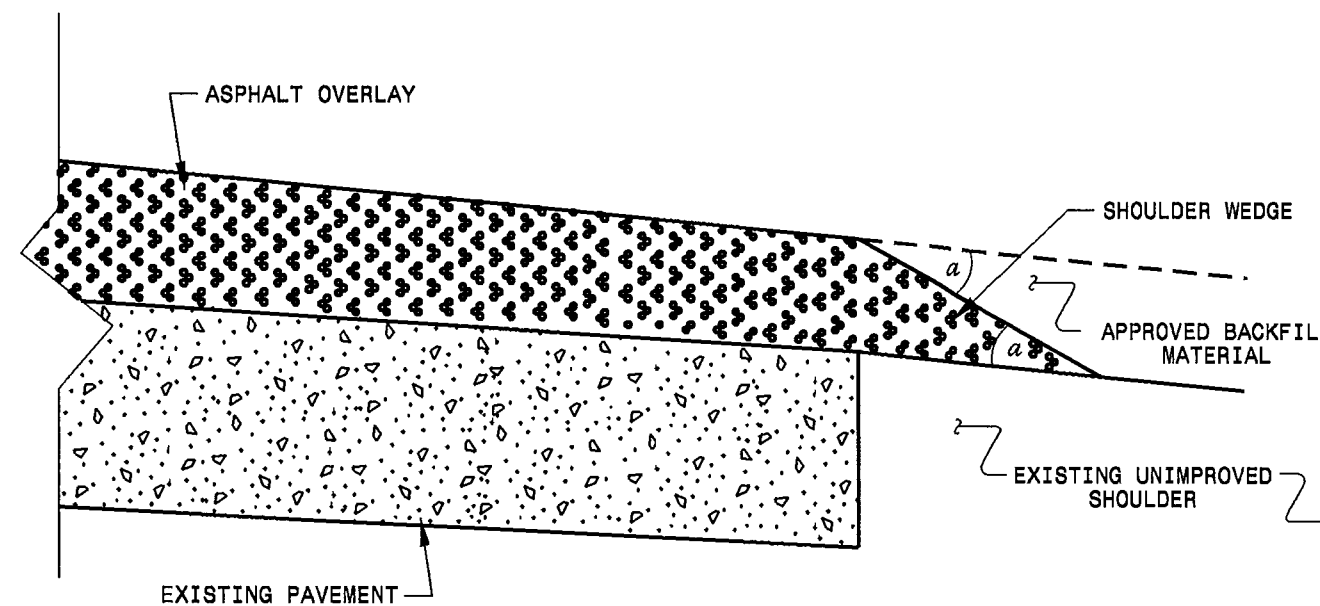
- ALL QUANTITIES ARE "ESTIMATED" AS INDICATED IN THE "SUMMARY OF QUANTITIES".
- CONSTRUCTION SHALL PROGRESS IN PHASES, IN THE ORDER INDICATED BELOW:
  - PHASE 1 - MILLING AND PATCHING (WHEN REQUIRED)
  - PHASE 2 - SURFACE OVERLAY
  - PHASE 3 - SHOULDER DROP-OFF REPAIR (AS NEEDED AND DIRECTED BY ENGINEER)
  - PHASE 4 - UTILITY ADJUSTMENTS (MANHOLE RING/COVER, VALVE/METER BOX RING/COVER, CATCH BASIN GRATE/COVER, DROP INLET GRATE/COVER, ETC.) WHEN REQUIRED.
- BRIDGES THAT HAVE FLOOR DRAINS, SHALL HAVE ALL FLOOR DRAINS LEFT OPEN. EXTRA CARE SHALL BE EXERCISED IN MILLING (IF REQUIRED) AND IN PLACING THE WEARING SURFACE AROUND FLOOR DRAINS SO AS NOT TO HINDER EFFECTIVE DRAINAGE.
- TEMPORARY ASPHALT WEDGING SHALL BE PLACED ON THE SAME DAY THAT BRIDGE AND/OR RAILROAD APPROACHES ARE MILLED (AND IF APPROACHES ARE MILLED PRIOR TO BRIDGE DECK).
- FOR TWO-LANE ROADWAYS - IT SHALL BE UNDERSTOOD THAT TYPICALLY ON A ROADWAY MEASURING 20 FEET OR LESS IN WIDTH, THE CENTER OF THE WHITE EDGELINE SHALL BE LOCATED SIX INCHES FROM THE EDGE OF PAVEMENT ON EITHER SIDE OF THE ROADWAY; ON A ROADWAY MEASURING 22 FEET IN WIDTH, TRAVEL LANES SHALL MEASURE 10 FEET AND THE WHITE EDGELINE SHALL BE LOCATED ONE FOOT FROM THE EDGE OF PAVEMENT ON EITHER SIDE; ON A ROADWAY MEASURING 24 FEET IN WIDTH, TRAVEL LANES SHALL MEASURE 11 FEET AND THE WHITE EDGELINE SHALL BE LOCATED ONE FOOT FROM THE EDGE OF PAVEMENT ON EITHER SIDE; ON A ROADWAY MEASURING 26 FEET OR MORE IN WIDTH, TRAVEL LANES SHALL MEASURE 12 FEET AND THE WHITE EDGELINE SHALL BE LOCATED NO LESS THAN ONE FOOT FROM THE EDGE OF PAVEMENT ON EITHER SIDE. THIS SHALL BE STANDARD PRACTICE UNLESS OTHERWISE DIRECTED BY THE ENGINEER.
- PAPER JOINTS ARE TO BE PLACED BETWEEN DAYS OF PAVING OPERATIONS AS SPECIFIED IN THE STANDARD SPECIFICATIONS SECTION 610-11.
- ALL MILLED AREAS WILL BE PAVED WITHIN 72 HOURS UNLESS APPROVED BY THE ENGINEER.
- REPLACE ANY PORTION OF STOP BARS AND OTHER PAVEMENT MARKINGS AT ANY INTERSECTION INCLUDING Y-LINES NOT ACTUALLY BEING PAVED OVER, THAT ARE OBLITERATED BY THE PAVING OPERATION EITHER BY HAULING WHEEL TRACKS OR TACK TRUCK BY THE END OF EACH RESURFACING OPERATION



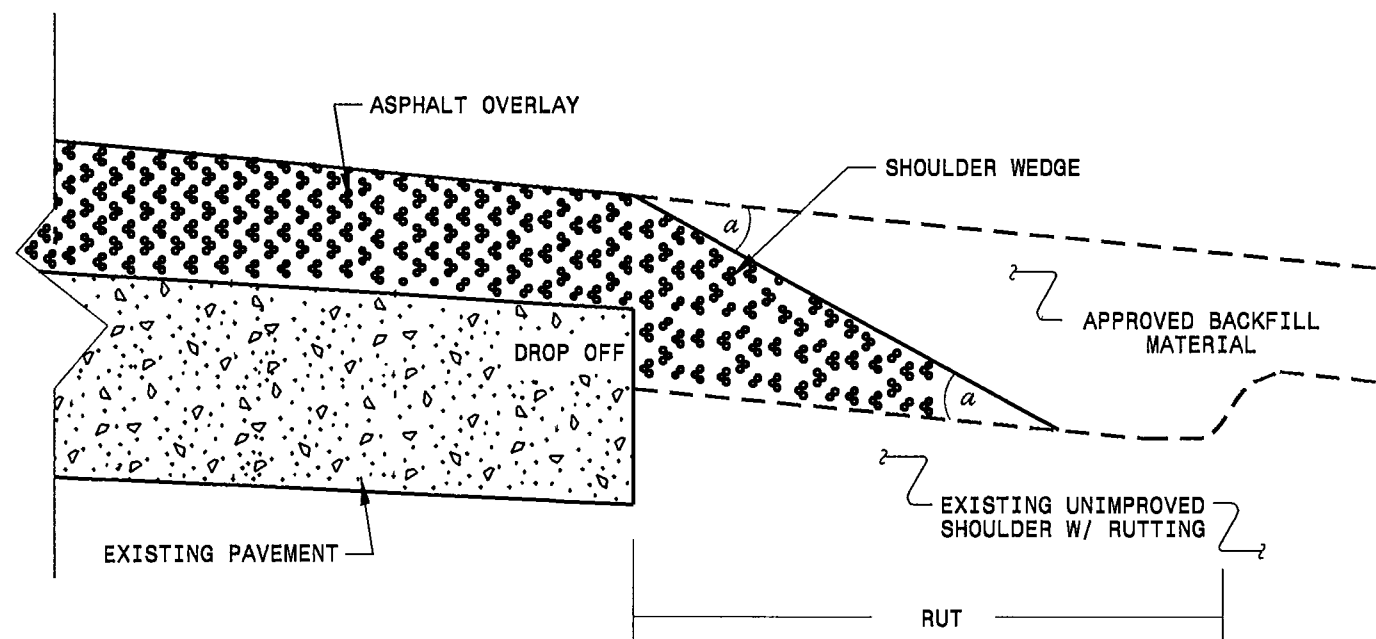
NOTES:

- 1) DETAIL DOES NOT APPLY TO OGAF C AND ULTRA-THIN BONDED WEARING COURSE.
- 2) BACKFILL SHOULDER WITH APPROVED MATERIAL.
- 3) THE SHOULDER WEDGE DEVICE MAY BE DISENGAGED AT PAVED DRIVEWAYS AND SIDE STREETS, HIGH SHOULDERS, AND OTHER LOCATIONS NOT FEASIBLE TO CONSTRUCT AS DIRECTED BY THE ENGINEER.

**SHOULDER WEDGE DETAIL**  
(Resurfacing Projects w/ Widening or  
with Existing Paved Shoulder having no dropoffs)



**SHOULDER WEDGE DETAIL**  
(Resurfacing Projects w/ NO Widening)



**SHOULDER WEDGE DETAIL**  
(Resurfacing Adjacent to  
Rutted Shoulder)

- SHOULDER WEDGE ANGLE = 30°

CONTRACT STANDARDS  
AND DEVELOPMENT UNIT  
Office 919-707-6950 FAX 919-250-4119

**SHOULDER WEDGE  
DETAILS**

ORIGINAL BY: T.SPELL DATE: 7-19-11  
MODIFIED BY: DATE: 10/18/12  
CHECKED BY: DATE:  
FILE SPEC.: s:\usr\details\stand\shoulderwedge\detail.dgn



PROJECT NO.	SHEET NO.	TOTAL NO.
2018CPT.09.09.10851, 2018CPT.09.10.20851	12	

### SUMMARY OF QUANTITIES

PROJECT NO	COUNTY	MAP NO	ROUTE	DESCRIPTION	TYP NO	LANES	LANE TYPE	FINAL SURFACE TESTING REQUIRED	WARM MIX ASPHALT REQUIRED	LENGTH	WIDTH	0106000000-E	1220000000-E	1245000000-E	1297000000-E	1330000000-E	1503000000-E	1523000000-E	1575000000-E	1704000000-E	6000000000-E	6071010000-E				
										MI	FT	BORROW EXCAVATION	INCIDENTAL STONE BASE	SHOULDER RECONSTRUCTI ON	MILLING ASPHALT PAVEMENT, 1 1/2"DEPTH	INCIDENTAL MILLING	INTERMEDIATE COURSE, I19.0C	SURFACE COURSE, S9.5C	ASPHALT BINDER FOR PLANT MIX	PATCHING EXISTING PAVEMENT	TEMPORARY SILT FENCE	WATTLE				
											CY	TONS	SMI	SY	SY	TONS	TONS	TONS	TONS	LF	LF					
2018CPT.09.09.10851	Stokes	1	NC 704	FROM PAVEMENT JT. AT STOVALL RD. (SR 1612) TO NC 8	1	2	2WU	NO	NO	3.146	22	378	282	6.29	40,604			3,773	223	10	1,258	126				
<b>TOTAL FOR MAP NO. 1</b>											<b>3.146</b>		<b>378</b>	<b>282</b>	<b>6.29</b>	<b>40,604</b>			<b>3,773</b>	<b>223</b>	<b>10</b>	<b>1,258</b>	<b>126</b>			
2018CPT.09.09.10851	Stokes	2	NC 89	FROM BRIDGE# 60 NEAR NC 8 TO BRIDGE #17 NEAR LYNCHBURG RD./NC 268	1	2	2WU	NO	NO	2.682	21	322	141	5.36	33,366			3,101	183	10	1,073	107				
<b>TOTAL FOR MAP NO. 2</b>											<b>2.682</b>		<b>322</b>	<b>141</b>	<b>5.36</b>	<b>33,366</b>			<b>3,101</b>	<b>183</b>	<b>10</b>	<b>1,073</b>	<b>107</b>			
2018CPT.09.09.10851	Stokes	3	NC 66	FROM FLYNT RD. SR 1219 TO MOORE SPRINGS RD. SR 1001	2	2	2WU	NO	NO	3.25	22	390	360	6.50		489		4,424	261	50	1,300	130				
<b>TOTAL FOR MAP NO. 3</b>											<b>3.25</b>		<b>390</b>	<b>360</b>	<b>6.50</b>		<b>489</b>		<b>4,424</b>	<b>261</b>	<b>50</b>	<b>1,300</b>	<b>130</b>			
<b>TOTAL FOR PROJ NO. 2018CPT.09.09.10851</b>											<b>9.078</b>		<b>1,090</b>	<b>783</b>	<b>18.15</b>	<b>73,970</b>			<b>489</b>		<b>11,298</b>	<b>667</b>	<b>70</b>	<b>3,631</b>	<b>363</b>	
2018CPT.09.10.20851	Stokes	4	WALNUT COVE SCHOOL RD. SR 2094	FROM NC 89 TO VISITORS SIGN	2	2	2WU	NO	NO	0.409	23	49	60	0.82		511		512	30	10	163	16				
<b>TOTAL FOR MAP NO. 4</b>											<b>0.409</b>		<b>49</b>	<b>60</b>	<b>0.82</b>		<b>511</b>		<b>512</b>	<b>30</b>	<b>10</b>	<b>163</b>	<b>16</b>			
2018CPT.09.10.20851	Stokes	5	ROSEBUD RD. SR 1945	BROOK COVE RD. SR 1941 TO BRIDGE # 98 NEAR E. RD. SR 1937	2	2	2WU	NO	NO	2.295	22	275	231	4.59	163	978		2,753	162	10	918	92				
<b>TOTAL FOR MAP NO. 5</b>											<b>2.295</b>		<b>275</b>	<b>231</b>	<b>4.59</b>	<b>163</b>	<b>978</b>		<b>2,753</b>	<b>162</b>	<b>10</b>	<b>918</b>	<b>92</b>			
2018CPT.09.10.20851	Stokes	6	RIVER RD. SR 1903	FROM E.O.P. AT PINE HALL RD. SR 1908 TO ROCKINGHAM CO. LINE	2	2	2WU	NO	NO	1.067	23	128	12	2.13		256		1,416	84	10	427	43				
<b>TOTAL FOR MAP NO. 6</b>											<b>1.067</b>		<b>128</b>	<b>12</b>	<b>2.13</b>		<b>256</b>		<b>1,416</b>	<b>84</b>	<b>10</b>	<b>427</b>	<b>43</b>			
2018CPT.09.10.20851	Stokes	7	PINE HALL RD. SR 1908	FROM BRIDGE NO.115 NEAR RIVER RD. SR 1903 TO PVMT. JT AT ENTRANCE TO DUKE POWER STEAM PLANT RD.	3	2	2WU	NO	NO	2.762	24	331	320	5.52	38,882		6,148	3,611	508	10	1,105	110				
<b>TOTAL FOR MAP NO. 7</b>											<b>2.762</b>		<b>331</b>	<b>320</b>	<b>5.52</b>	<b>38,882</b>		<b>6,148</b>	<b>3,611</b>	<b>508</b>	<b>10</b>	<b>1,105</b>	<b>110</b>			
2018CPT.09.10.20851	Stokes	8	AMOS RD. SR 1745	FROM REYNOLDS RD. SR 1688 TO ROCKINGHAM CO. LINE	4	2	2WU	NO	NO	0.476	17	57	20	0.95				591	35		190	19				
<b>TOTAL FOR MAP NO. 8</b>											<b>0.476</b>		<b>57</b>	<b>20</b>	<b>0.95</b>				<b>591</b>	<b>35</b>		<b>190</b>	<b>19</b>			
2018CPT.09.10.20851	Stokes	9	AMOS RD. SR 1222 (ROCKINGHAM CO.)	FROM FORSYTH CO. LINE TO END OF MAINTENANCE IN ROCKINGHAM CO.	4	2	2WU	NO	NO	0.211	19	25	20	0.42				292	17		84	8				
<b>TOTAL FOR MAP NO. 9</b>											<b>0.211</b>		<b>25</b>	<b>20</b>	<b>0.42</b>				<b>292</b>	<b>17</b>		<b>84</b>	<b>8</b>			
<b>TOTAL FOR PROJ NO. 2018CPT.09.10.20851</b>											<b>7.22</b>		<b>865</b>	<b>663</b>	<b>14.43</b>	<b>39,045</b>			<b>1,745</b>		<b>6,148</b>	<b>9,175</b>	<b>836</b>	<b>40</b>	<b>2,887</b>	<b>288</b>
<b>GRAND TOTAL</b>											<b>16.298</b>		<b>1,955</b>	<b>1,446</b>	<b>32.58</b>	<b>113,015</b>			<b>2,234</b>		<b>6,148</b>	<b>20,473</b>	<b>1,503</b>	<b>110</b>	<b>6,518</b>	<b>651</b>

**NOTE: All Quantities listed include turn lanes and are estimates; Payment will be based on actual field measurements and quantities received.**

PROJECT NO.	SHEET NO.
2018CPT.09.09.10851, 2018CPT.09.10.20851	13

## THERMOPLASTIC AND PAINT QUANTITIES

PROJECT NO	COUNTY	MAP NO	ROUTE	DESCRIPTION	TYP NO	LANES	LANE TYPE	LENGTH	WIDTH	4413000000-E	4685000000-E	4686000000-E		4810000000-E	4847010000-E		4847050000-E	4847100000-E		4850000000-E	4905000000-N	
										WORK ZONE ADVANCE/GE NERAL WARNING SIGNING	4" X 90 M WHITE THERMO	4" X 120 M YELLOW THERMO	4" X 120 M WHITE THERMO	4" YELLOW PAINT	4" WHITE POLYUREA (HIGHLY REFLECTIVE ELEMENTS)	4" YELLOW POLYUREA (HIGHLY REFLECTIVE ELEMENTS)	8" YELLOW POLYUREA (HIGHLY REFLECTIVE ELEMENTS)	24" WHITE POLYUREA (HIGHLY REFLECTIVE ELEMENTS)	24" YELLOW POLYUREA (HIGHLY REFLECTIVE ELEMENTS)	REMOVAL OF PAVEMENT MARKING LINES (4")	SNOW PLOWABLE MARKERS	
									MI	FT	SF	LF	LF	LF	LF	LF	LF	LF	LF	EA		
2018CPT.09.09.10851	Stokes	1	NC 704	FROM PAVEMENT JT. AT STOVALL RD. (SR 1612) TO NC 8	1	2	2WU	3.146	22	352				33,222	33,911	33,222				33,222	208	
<b>TOTAL FOR MAP NO. 1</b>									<b>3.146</b>		<b>352</b>			<b>33,222</b>	<b>33,911</b>	<b>33,222</b>				<b>33,222</b>	<b>208</b>	
2018CPT.09.09.10851	Stokes	2	NC 89	FROM BRIDGE# 60 NEAR NC 8 TO BRIDGE #17 NEAR LYNCHBURG RD./NC 268	1	2	2WU	2.682	21	300				29,587	29,183	29,587	78	68		29,587	177	
<b>TOTAL FOR MAP NO. 2</b>									<b>2.682</b>		<b>300</b>			<b>29,587</b>	<b>29,183</b>	<b>29,587</b>	<b>78</b>	<b>68</b>		<b>29,587</b>	<b>177</b>	
2018CPT.09.09.10851	Stokes	3	NC 66	FROM FLYNT RD. SR 1219 TO MOORE SPRINGS RD. SR 1001	2	2	2WU	3.25	22	364				34,320	35,052	34,320			50	34,320	215	
<b>TOTAL FOR MAP NO. 3</b>									<b>3.25</b>		<b>364</b>			<b>34,320</b>	<b>35,052</b>	<b>34,320</b>			<b>50</b>	<b>34,320</b>	<b>215</b>	
<b>TOTAL FOR PROJ NO. 2018CPT.09.09.10851</b>									<b>9.078</b>		<b>1,016</b>			<b>97,129</b>	<b>98,146</b>	<b>97,129</b>	<b>78</b>	<b>68</b>	<b>50</b>	<b>97,129</b>	<b>600</b>	
											<b>195,275</b>			<b>118</b>								
2018CPT.09.10.20851	Stokes	4	WALNUT COVE SCHOOL RD. SR 2094	FROM NC 89 TO VISITORS SIGN	2	2	2WU	0.409	23	46	4,395	4,314										
<b>TOTAL FOR MAP NO. 4</b>									<b>0.409</b>		<b>46</b>	<b>4,395</b>	<b>4,314</b>									
2018CPT.09.10.20851	Stokes	5	ROSEBUD RD. SR 1945	BROOK COVE RD. SR 1941 TO BRIDGE # 98 NEAR E. RD. SR 1937	2	2	2WU	2.295	22	257	24,694	24,235	50									
<b>TOTAL FOR MAP NO. 5</b>									<b>2.295</b>		<b>257</b>	<b>24,694</b>	<b>24,235</b>	<b>50</b>								
2018CPT.09.10.20851	Stokes	6	RIVER RD. SR 1903	FROM E.O.P. AT PINE HALL RD. SR 1908 TO ROCKINGHAM CO. LINE	2	2	2WU	1.067	23	120	11,481	11,268	20									
<b>TOTAL FOR MAP NO. 6</b>									<b>1.067</b>		<b>120</b>	<b>11,481</b>	<b>11,268</b>	<b>20</b>								
2018CPT.09.10.20851	Stokes	7	PINE HALL RD. SR 1908	FROM BRIDGE NO.115 NEAR RIVER RD. SR 1903 TO PVMT. JT AT ENTRANCE TO DUKE POWER STEAM PLANT RD.	3	2	2WU	2.762	24	309	29,714	29,161	56	29,161								
<b>TOTAL FOR MAP NO. 7</b>									<b>2.762</b>		<b>309</b>	<b>29,714</b>	<b>29,161</b>	<b>56</b>	<b>29,161</b>							
2018CPT.09.10.20851	Stokes	8	AMOS RD. SR 1745	FROM REYNOLDS RD. SR 1688 TO ROCKINGHAM CO. LINE	4	2	2WU	0.476	17	77												
<b>TOTAL FOR MAP NO. 8</b>									<b>0.476</b>		<b>77</b>											
2018CPT.09.10.20851	Stokes	9	AMOS RD. SR 1222 (ROCKINGHAM CO.)	FROM FORSYTH CO. LINE TO END OF MAINTENANCE IN ROCKINGHAM CO.	4	2	2WU	0.211	19													
<b>TOTAL FOR MAP NO. 9</b>									<b>0.211</b>													
<b>TOTAL FOR PROJ NO. 2018CPT.09.10.20851</b>									<b>7.22</b>		<b>809</b>	<b>70,284</b>	<b>68,978</b>	<b>126</b>	<b>29,161</b>							
											<b>69,104</b>											
<b>GRAND TOTAL</b>									<b>16.298</b>		<b>1,825</b>	<b>70,284</b>	<b>68,978</b>	<b>126</b>	<b>126,290</b>	<b>98,146</b>	<b>97,129</b>	<b>78</b>	<b>68</b>	<b>50</b>	<b>97,129</b>	<b>600</b>
											<b>69,104</b>			<b>195,275</b>			<b>118</b>					

**NOTE: All Quantities listed include turn lanes and are estimates; Payment will be based on actual field measurements and quantities received.**